



LUXURY VILLA TENTS



GREEN STAR



GREEN STAR – where innovation, sustainability, and architecture go hand in hand to provide the single most satisfying glamping experience

Green Star is ruled by extensive work experience, in-house developing technologies, and precious know-how. Two highly dedicated teams of experts from Slovenia, joining creative forces from the most innovative architectural studio and first-rate glamorous tent production company, we are renowned for redefining luxurious experiential accommodations, thus paving the way to an exciting future in this type of lodging segment.

SMART DESIGN – we bring concepts to life in all their uniqueness, glam and functionality without having to sacrifice any sustainability elements or lower levels of desired sophistication, suitable for private or business use.

Layers of prudently selected world-class fabrics are used to guarantee longevity, defying the most unfavorable weather conditions. Wooden platforms, on which luxurious tents stand, are supported by 36 legs and can be equally efficiently set up on either straight or uneven terrains.

SUSTAINABLE MATERIALS – we use natural, sustainable materials, all certified and originating from within Europe. The TILY solid wood plates and cross-laminated timber represent a clever, unique solution that makes the construction frame last longer than you ever imagined possible. The Bedouin lodging experience does not merely offer a glamorous getaway, it also ensures high-standard protection and safety, so all there is left to do, is to be carefree and enjoy.

GREEN SOLUTIONS – thinking green while developing modular concepts allows us to make sudden alterations, when so required, to change or enhance individual parts, remove or add them, yet creating no unnecessary harmful environmental impact as all the materials are 100% recyclable.

INNOVATIVE VILLA DESIGN BENEFITS – eco-friendly, adventurous, smart, and authentic with a highly glamorous touch. We are proving that luxurious resorts and glamping sites can be and are created while dutifully respecting the natural environment and appreciating ecological safety. Our in-house developed smart design enables the tent villas to be set up in several variations, all supporting you on your spiritual journey, volunteer tourism and nature-embracing eco-tourism.



BEDOUIN LUXURY VILLA TENT 110



LUXURY VILLA TENT 55



LUXURY VILLA TENT GAIA 64



PLEASURE TENT 37



PLEASURE TENT 25



PLEASURE TENT 14



FESTIVAL GHOST TENT 14



KINGDOM TENT 9X5



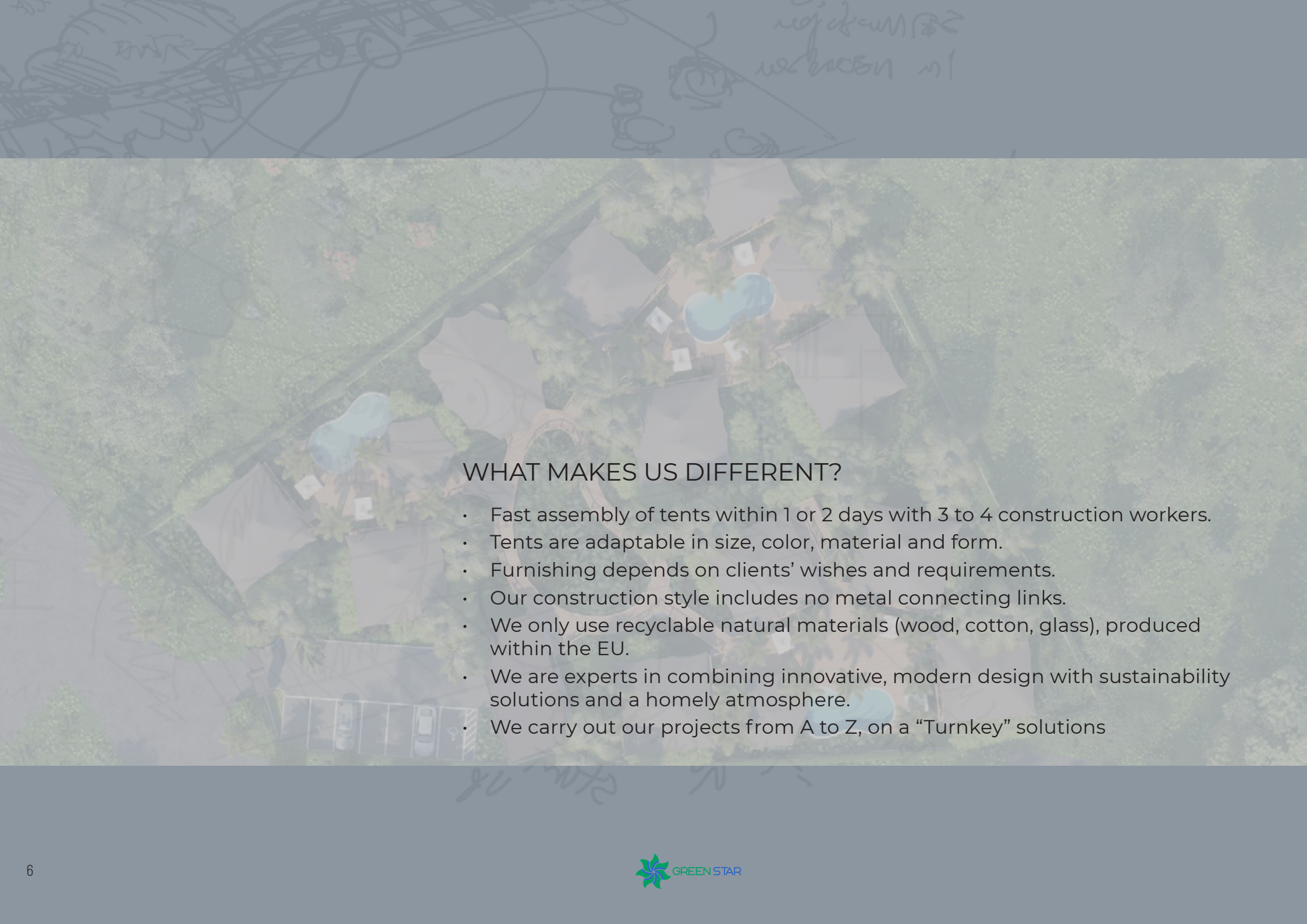
KINGDOM TENT 6X4



ADVENTURE TENT

CONTENTS

THE BEDOUIN LUXURIOUS LINE	7
BEDOUIIN LUXURY VILLA TENT 110	8
LUXURY VILLA TENT GAIA 64	18
LUXURY VILLA TENT 55	20
THE PLEASURE LINE	25
PLEASURE TENT 37	26
PLEASURE TENT 25	30
PLEASURE TENT 14	32
FESTIVAL GHOST TENT 14	34
THE KINGDOM LINE	36
KINGDOM TENT 9X5	36
KINGDOM TENT 6X4	38
THE ADVENTURE LINE	40
ADVENTURE TENT	40
MATERIAL & DURABILITY	42
REFERENCES	48
ABOUT GREEN STAR	51
ABOUT ROBERT KLUN ARCHITECTS	52

An aerial photograph of a resort or campsite. Several large, light-colored tents are pitched on a grassy area. There are two swimming pools, one of which is a circular hot tub. The area is surrounded by dense green trees and foliage. In the foreground, there is a parking lot with a few cars. The overall atmosphere is serene and natural.

WHAT MAKES US DIFFERENT?

- Fast assembly of tents within 1 or 2 days with 3 to 4 construction workers.
- Tents are adaptable in size, color, material and form.
- Furnishing depends on clients' wishes and requirements.
- Our construction style includes no metal connecting links.
- We only use recyclable natural materials (wood, cotton, glass), produced within the EU.
- We are experts in combining innovative, modern design with sustainability solutions and a homely atmosphere.
- We carry out our projects from A to Z, on a "Turnkey" solutions

THE BEDOUIN LUXURIOUS LINE

Tamed luxury in the vast wilderness



Bedouin tents – highly practical, comfy, and fabulous-looking. Spending leisure time in such a relaxing environment provides an authentic, close-to-nature experience, while the solid wood terrace is nothing short of ideal for cozy socializing. The wooden deck can be equipped with stylish outdoor furniture, a table with chairs or an outdoor sofa or beanbags,

however, opting for small pool options or a jacuzzi might be an excellent idea as well.

The sophisticated Bedouin line are available in various adaptable layouts. The assembled Bedouin can be presented either without furnishings, with a bathroom only, or completely furnished and fully optimized to provide superior comfort.

Furnished tents are offered according to our own design, however, you may purchase tents without any furnishings and design the interior yourself. Our team of highly skilled design experts will happily help you create your ideal interior, all while considering the aesthetics, sensitive to existing architecture and surrounding landscape.

BEDOUIN LUXURY VILLA TENT 110



LUXURY VILLA TENT 110

Type A

2 bedrooms with king-size beds

- living area: 56 m²
- platform: 110 m²
- terrace: 54 m²

CLTimber 16 x 16 cm

Bedrooms: 1 or 2 or 0 (or office...)

Bathroom : YES (or luxury bathroom of corian)

Type B

2 bedrooms with king-size beds
and large living area

- living area: 80 m²
- platform: 110 m²
- terrace: 30 m²

CLTimber 16 x 16 cm

Bedrooms: 1 or 2 or 0 (or office)

Bathroom : YES (or a luxurious bathroom,
designed with solid surface material Corian by
DuPont)

Layouts:

6 basic plus CUSTOMIZABLE OPTIONS



BEDOUIN LUXURY VILLA TENT 110

7,50 x 6,60 m = 56 m² or 7,50 x 10,10 m = 80 m²
on 110 m² wooden platform



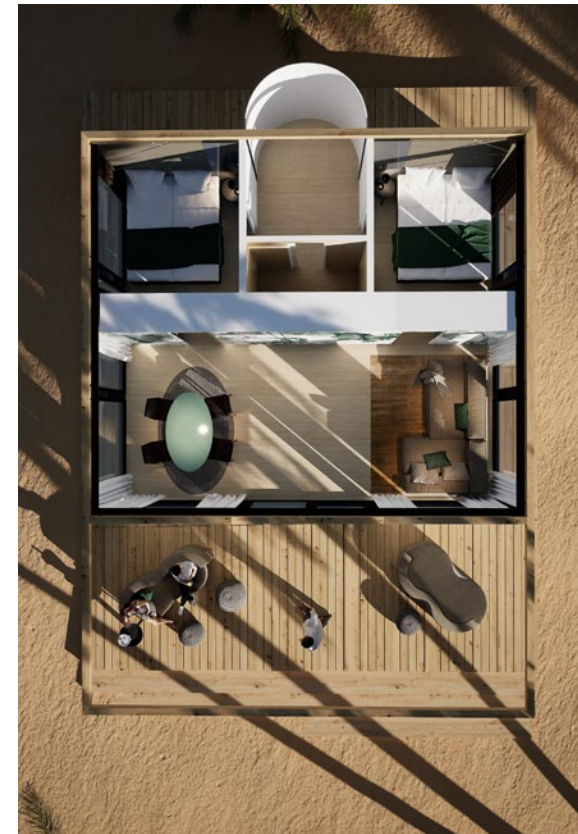
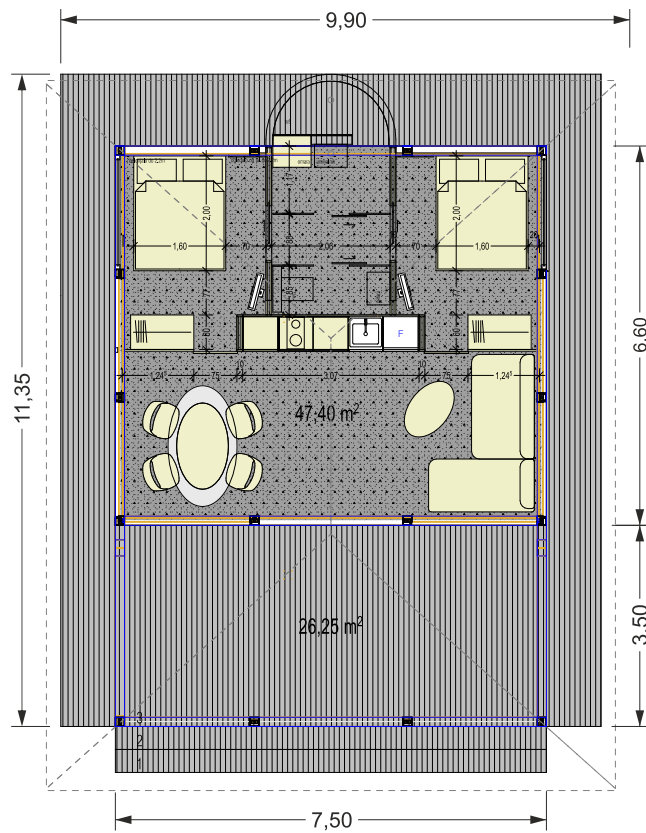
The largest and most luxurious tent from the Bedouin line is named Villa for a reason. The living area spans across spacious 80 m² interior, placed on a 110 m² wooden platform. Fully equipped and furnished, it offers an elegant oasis of tranquility and supreme comfort in natural surroundings, without disturbing the wholeness of the space where it has been set up.

The exterior of the tent is created in beautiful creamy earth tones, however, customers can choose between various color options to make sure the top-quality canvas, supplied by the renowned Sattler company, is absolutely to their liking. Inside, Bedouin's unique solution of combining the roof and the ceiling of the tent, adds to maintaining favorable temperatures in the living area.



BEDOUIN LUXURY VILLA TENT 110

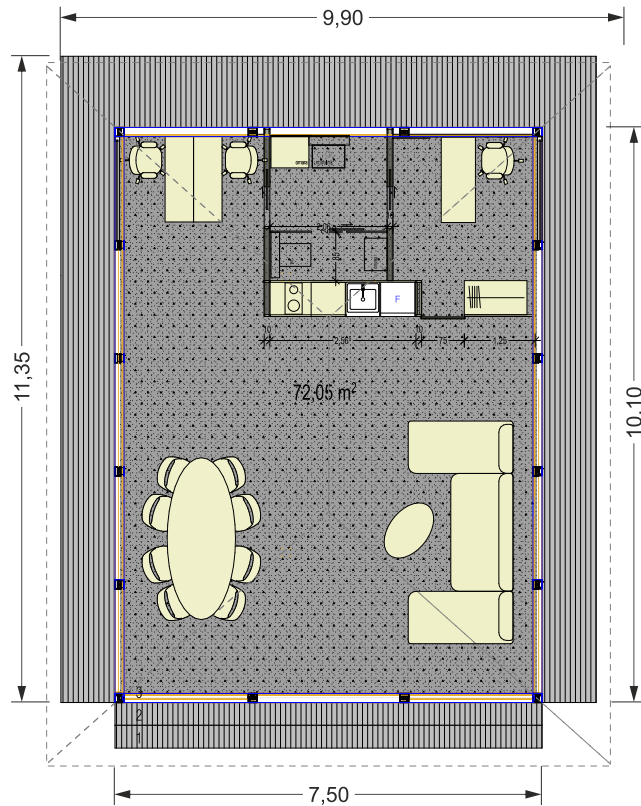
FLOOR PLAN TYPE 1.1 WITH TERRACE



7,50 x 6,60 m = 56 m² on 110 m² wooden platform

BEDOUIN LUXURY VILLA TENT 110

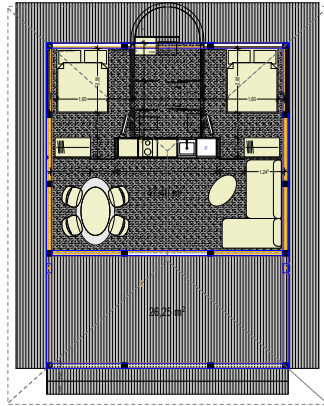
FLOOR PLAN TYPE 2.2 WITHOUT TERRACE



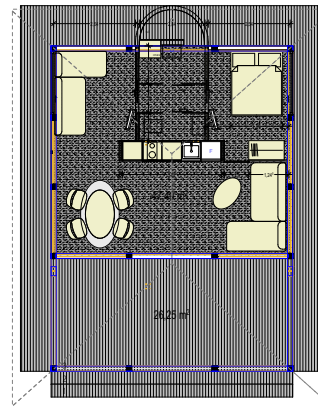
7,50 x 11,10 m = 83 m² on 110 m² wooden platform

BEDOUIN LUXURY VILLA TENT 110

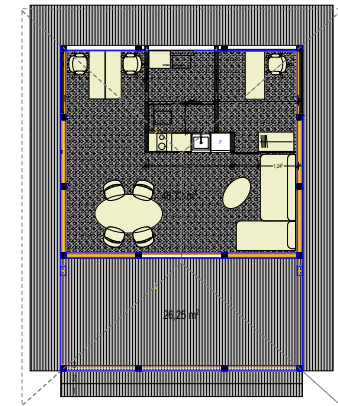
FLOOR PLAN TOPTIONS



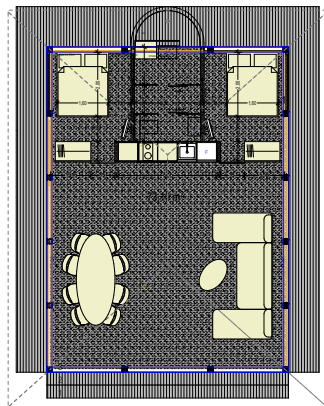
type 1.1



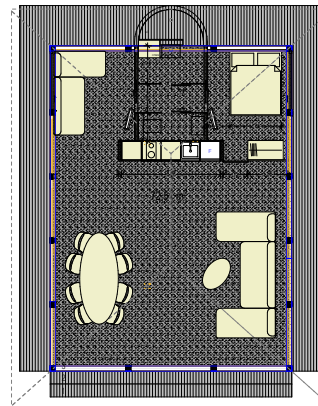
type 1.2



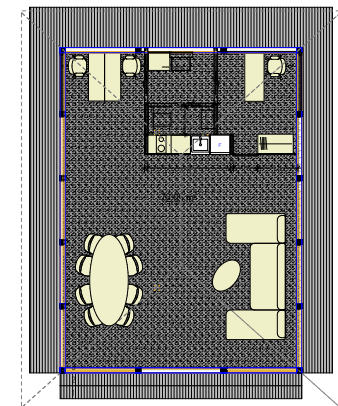
type 1.3



type 2.1



type 2.2

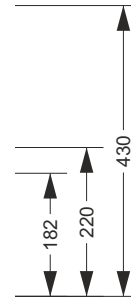
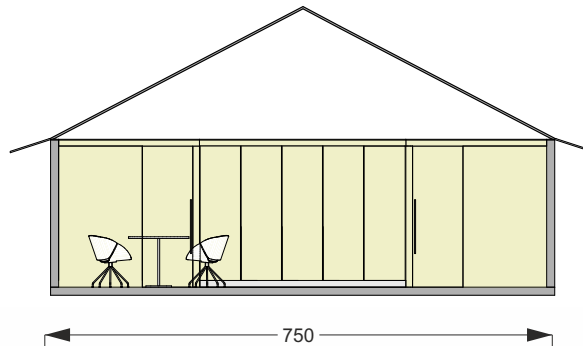


type 2.3

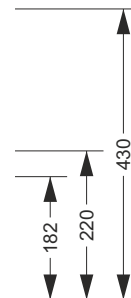
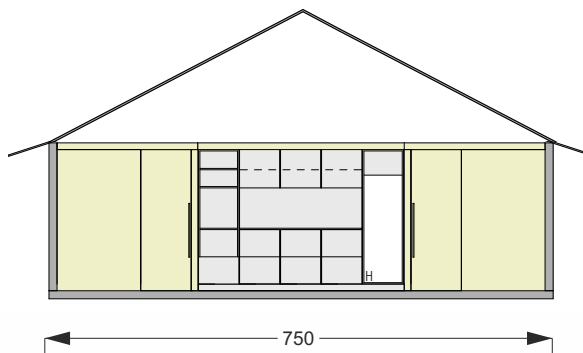
BEDOUIN LUXURY VILLA TENT 110

SECTIONS

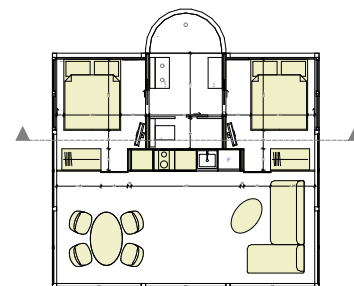
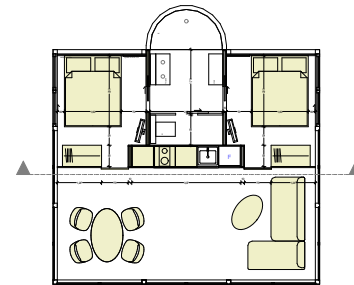
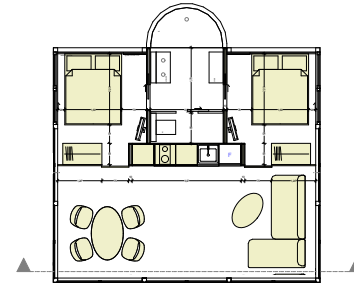
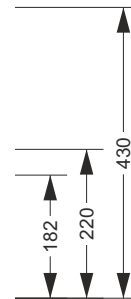
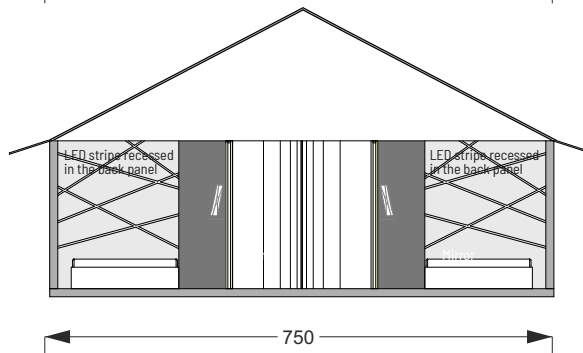
Section A-A



Section B-B



Section C-C



BEDOUIN LUXURY VILLA TENT 110

INTERIORS - THE LIVING AREA



The exquisite living room area of the Bedouin Luxury Villa Tent is furnished in a way that follows impeccable modern style. Guests can rest and relax on a specially-designed sofa with extra comfortable pillows, while smart decorations and artful wallpapers assure the feeling of well-being and warmth.

Eight windows offer beautiful views from all sides of the Bedouin Luxury Villa Tent, however, when guests desire some privacy, suitably thick curtains in serene color tones will provide all the intimacy one requires.

BEDOUIN LUXURY VILLA TENT 110

INTERIORS - THE BATHROOM



The Bedouin Luxury Villa Tent comes equipped with a marvelous cool-toned walk-in bathroom, created with natural materials and components,

including a stand-up shower, shelving, a mirror, and a wash basin with a cabinet.

BEDOUIN LUXURY VILLA TENT 110

OUTDOOR VIEW



Outside, you will find a highly comfortable solid wood terrace. Covering over 20 m2, it is perfectly suited for hosting evening gatherings or enjoying more quiet private moments. It is available with an optional shade sail to

provide more coolness, shade, and privacy. Flooring, made of CLT plates, may be either covered with vinyl or a trendy carpet.

BEDOUIN LUXURY VILLA TENT 110

EQUIPMENT

STANDARD EQUIPMENT

CONSTRUCTION for TENT

Beduin Tent GreenStar construction

Beduin Tent platform 8,00 x 6,50 m (legs nivelation)

Tili plates and pinus wood and terrace

Staircase 6,50 m

RUF fabric

Inside fabrics, back walls

Stretch pvc flooring 2TEC2

Lights and lighting system

Windows ALU anthracite, 6 fixed glass panels, 3x sliding system

Print, lift, packaging ...

EQUIPMENT

Electrical installation system

Air conditioning installation

Mechanical installations, plumbing ...

BATHROOM

2 wash basins

Toilet

Shower

Bathtub

Cabinet

FURNITURE for TENT

2 beds with optional positioning to double bed

Night stands with lamps

Upholstered sofa Klun K90 Babaloo

Table, solid wood

2 chairs, solid wood upholstered

Wardrobe

EXTRAS

CONSTRUCTION

Wide wooden staircase

BATHROOM

Made from Kerrock

INSTALATION

Air conditioning

FURNITURE

Rug

Curtains

TV set

Upholstered wall, lights, panels, mirror

KITCHEN

Cabinets with doors, elaminated decor design

Home appliances: refrigerator, dishwasher, microwave oven

OUTDOOR FURNITURE for TERRACE

Table, solid wood

2 chairs, solid wood

Outdoor sofa

Outdoor lighting

LUXURY VILLA TENT GAIA 64



Protection against heat and unfavorable weather conditions is secured via durable double fabric.

Construction style and all prudently chosen materials of the Bedouin Luxury 55 Tent also make sure the ventilation is incredibly efficient, thus spending time inside is always a pleasure.

AC is optional. The tent also comes equipped with classy lighting solutions.

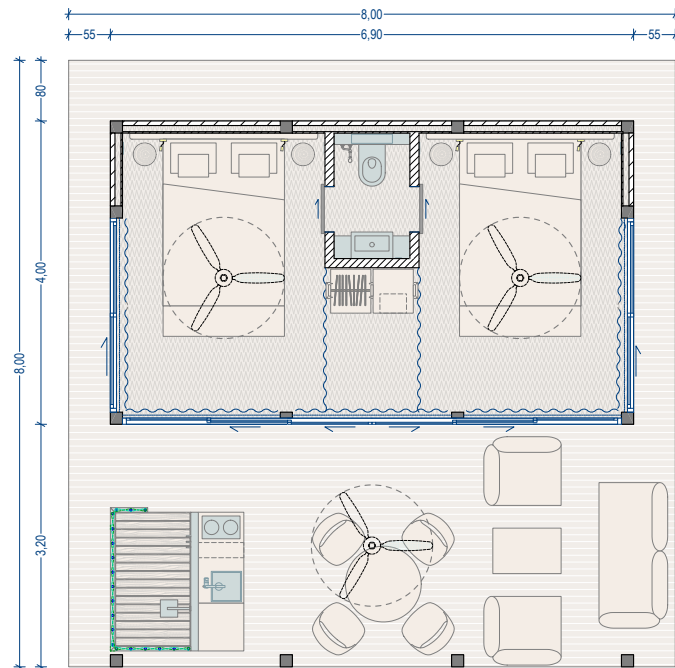
Making sure the construction is solid and long-lasting is the 12 x 12 cm profile CLT wood (Cross Laminated Timber Wood) – the best natural solution, synonymous with strength, protection



and longevity. There are no metal elements connecting the construction frame in order to avoid inevitable corrosion issues. Furthermore, a completely natural construction without intrusive metal parts is more pleasing to the eye.

LUXURY VILLA TENT GAIA 64

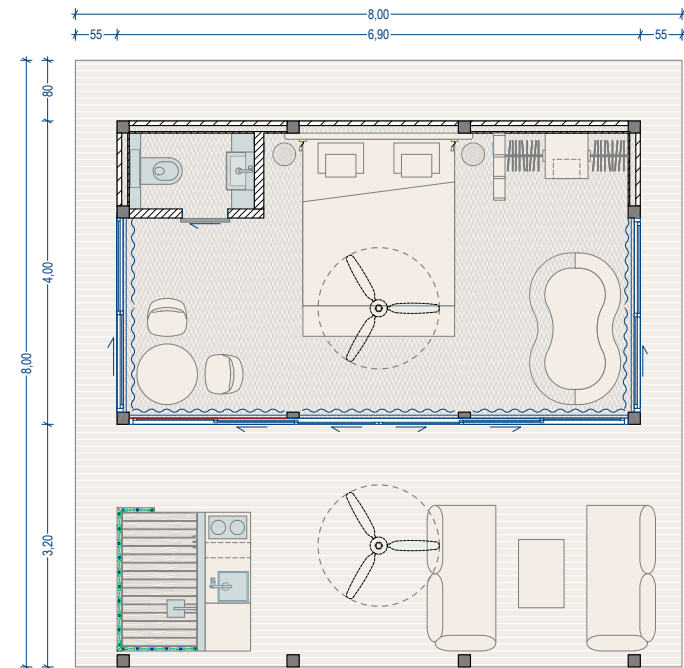
6,90 x 4,00 m = 27,6 m² on 64 m² wooden platform



2-BED BEDOUIN GAIA 64 TENT

1 or 2 Bedrooms with king-size bed

- living area: 27,6m²
- platform: 64 m²
- terrace: 25,6 m²
- CL Timber 12 x 12 cm



1-BED BEDOUIN GAIA 64 TENT

LUXURY VILLA TENT 55



Protection against heat and unfavorable weather conditions is secured via durable double fabric. Construction style and all prudently chosen materials of the Bedouin Luxury 55 Tent also make sure the ventilation is incredibly efficient, thus spending time inside is always a pleasure. AC is optional. The tent also comes equipped with classy lighting solutions.

Making sure the construction is solid and long-lasting is the 12 x 12 cm profile CLT wood (Cross Laminated Timber Wood) – the best natural solution, synonymous with strength, protection and longevity. There are no metal elements connecting the construction frame in order to avoid inevitable corrosion issues. Furthermore, a completely natural construction without intrusive metal parts is more pleasing to the eye.

BEDOUIN LUXURY 55 TENT

1 or 2 Bedrooms with king-size bed (up to 4 beds)

- living area: 35 m²
- platform: 55 m²
- terrace: 20 m²

CLTimber 12 x 12 cm

Bedrooms: 1 or 2

Bathroom : YES

Layouts: 3



LUXURY VILLA TENT 55

6,50 x 5,40 m = 35 m² on 55 m² wooden platform



The exterior of the tent is created with bright colors, however, customers can choose between various colors of the top-quality canvas, supplied by the renowned Sattler company.

Assembly of the Bedouin Luxury 55 Tent is quick and simple. It requires no more than 1-2 days with 3-4 workers completing the construction.



LUXURY VILLA TENT 55

FLOOR PLAN



LUXURY VILLA TENT 55

INTERIORS - THE LIVING AREA AND THE BATHROOM



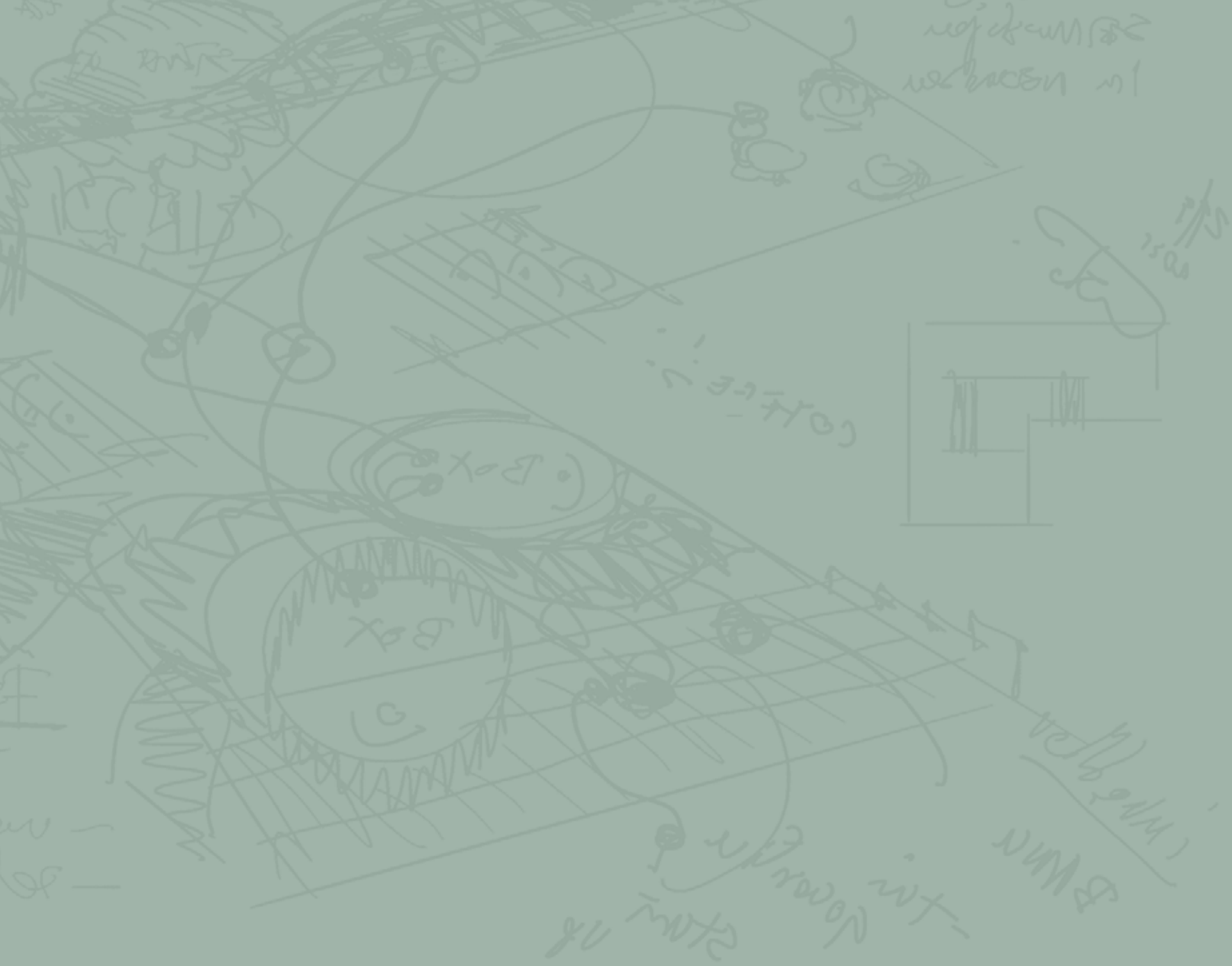
The bedroom comes optionally equipped with a TV. Customers may also decide to add two large cabinets for the luggage.



The bathroom, if optionally chosen, is elegantly furnished with a large mirror, a modern bathtub and two wash basins with



storage cabinets. Interior design is focused on being sustainable and made of natural materials and components.



THE PLEASURE LINE

Fill your vacation with fun times and comfort



PLEASURE tents – highly practical and comfy. Spending leisure time in a fun, superbly relaxing environment provides an authentic, close-to-nature experience, while the solid wood terrace is nothing short of ideal for a little bit of cozy socializing.

The PLEASURE line represents four models from 25 m² to 9 m² of interior space, ideal for 4 (the largest tent) to 2 people (the smallest tent) – the PLEASURE Tent 37, the PLEASURE Tent 25, the LEISURE Tent 14, and the Festival Ghost Tent 9, each available in various adaptable layouts.

PLEASURE TENT 37



PLEASURE TENT 37



PLEASURE 37 TENT

1 or 2 bedrooms with king-size beds
(up to 4 beds)

- living area: 25 m²
- platform: 37,5 m²
- terrace: 12,5 m²

CLTimber 26 x 10 cm

Bedrooms: 1 or 2

Bathroom : optional

Layouts: 3

The largest PLEASURE tent variation spans over 25m² living area on a platform of 37,50m². It comes with a ventilation system for superb inner climate conditions (AC is optional) and four windows, offering beautiful views from all sides of the tent. Protection against heat and unfavorable weather conditions is secured via durable double fabric.

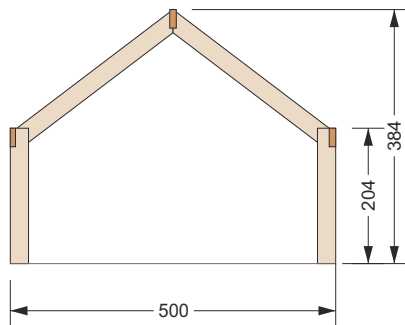
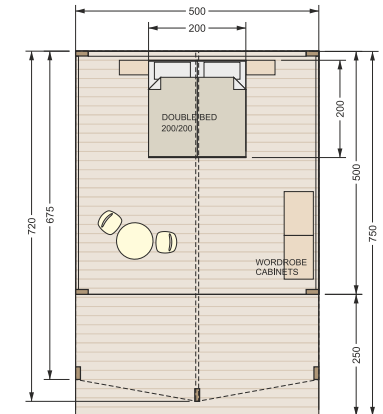
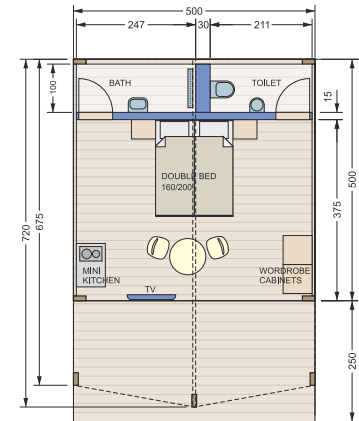
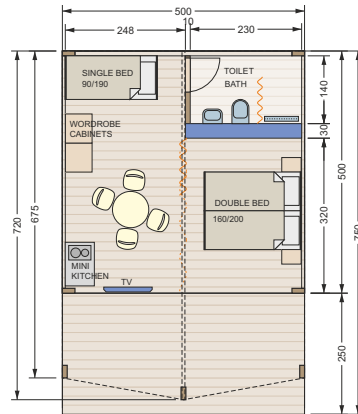
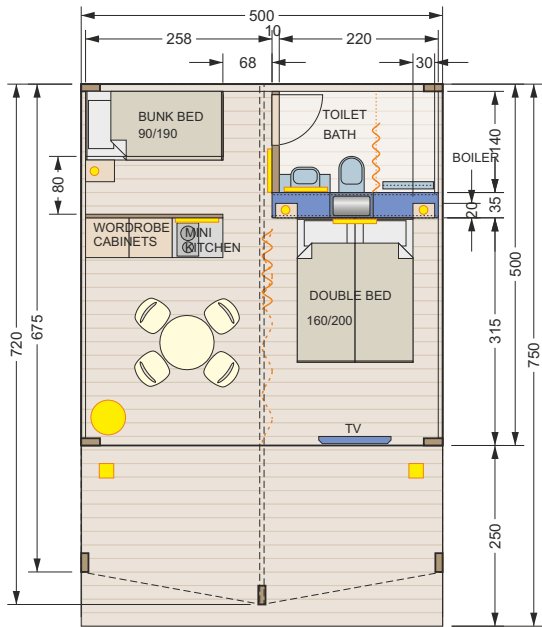
Its interior has been designed to ensure maximum efficiency in making the most out of every available square meter and furnishing the tent with two elegant beds and cabinets. Equipped with lights, one can easily enjoy leisure time in the evenings reading books, playing board games or chatting with friends.



PLEASURE TENT 37

FLOOR PLAN - LAYOUT OPTIONS

25 m² with ventilation and four windows on the platform of 37,50 m²



Making sure the construction is solid and long-lasting is the 26 x 10 cm profile CLT wood (Cross Laminated Timber Wood) – the best natural solution, synonymous with strength, protection and longevity.

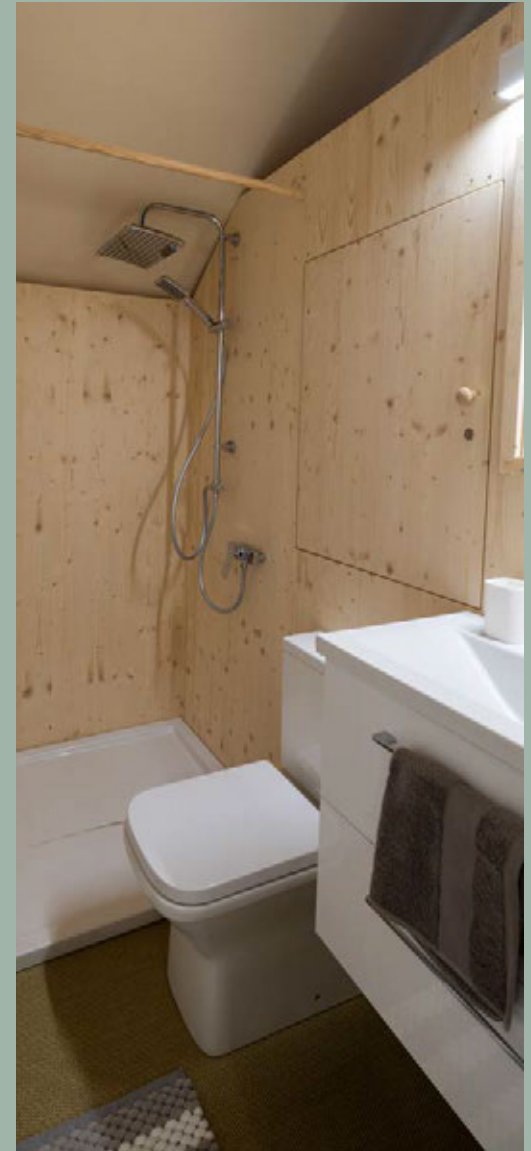
There are no metal elements connecting the construction frame in order to avoid inevitable corrosion issues. Furthermore, a completely natural construction without intrusive metal parts is more pleasing to the eye. Only recyclable natural materials (wood, cotton, glass), produced within the EU, are used to create our tents.

Equipped with lights, one can easily enjoy leisure time in the evenings.

Fast assembly of tents is offered, within no more than 1 or 2 days and with 3 to 4 construction workers completing the construction work. Tents are adaptable in size, color, material and form – customers are invited to even choose custom-made graphics or printed logos.

PLEASURE TENT 37

INTERIORS - THE LIVING AREA AND THE BATHROOM



PLEASURE TENT 25



PLEASURE 25 TENT

1 bedroom with a king-size bed

- living area: 16 m²
- platform: 25,5 m²
- terrace: 8 m²

CLTimber 26 x 10 cm

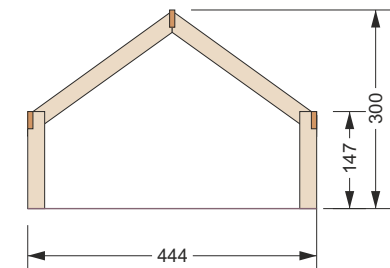
Bedrooms: 1

Bathroom: optional

Layouts: 3

The PLEASURE 25 comes with a ventilation system for superb inner climate conditions (AC is optional).

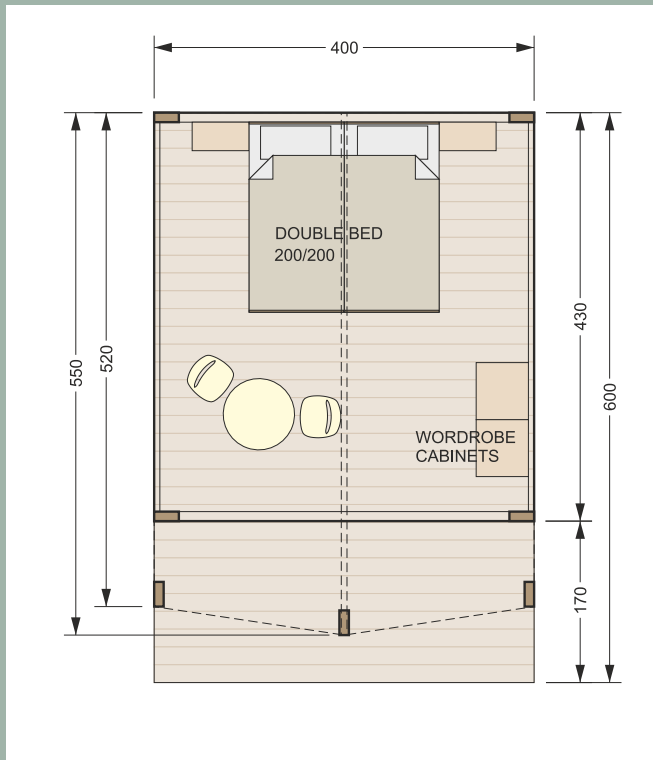
Its interior has been designed to ensure maximum efficiency in making the most out of every available square meter.



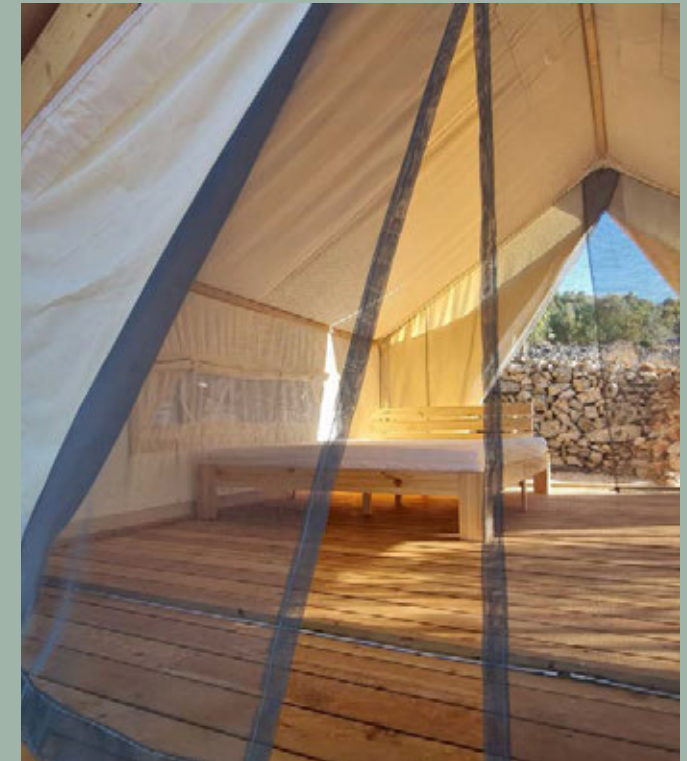
PLEASURE TENT 25

16 m² with ventilation and four windows on the platform of 25 m²

FLOOR PLAN



DETAILS



Making sure the construction is solid and long-lasting is the 26 x 10 cm profile CLT wood (Cross Laminated Timber Wood) – the best natural solution, synonymous with strength, protection and longevity.

There are no metal elements connecting the construction frame in order to avoid inevitable

corrosion issues. Furthermore, a completely natural construction without intrusive metal parts is more pleasing to the eye. Only recyclable natural materials (wood, cotton, glass), produced within the EU, are used to create our tents.

Equipped with lights, one can easily enjoy leisure time in the evenings.

Fast assembly of tents is offered, within no more than 1 or 2 days and with 3 to 4 construction workers completing the construction work. Tents are adaptable in size, color, material and form – customers are invited to even choose custom-made graphics or printed logos.

PLEASURE TENT 14



PLEASURE 14 TENT

1 bedroom with a king-size bed

- living area: 9 m²
- platform: 13,5 m²
- terrace: 4,5 m²

CLTimber 20 x 6 cm

Bedrooms: 1

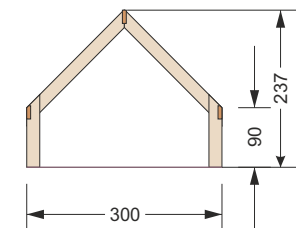
Bathroom : optional

Layouts: 3

The PLEASURE 14 comes with a ventilation system for superb inner climate conditions (AC is optional).

Its interior has been designed to ensure maximum efficiency in making the most out of every available square meter.

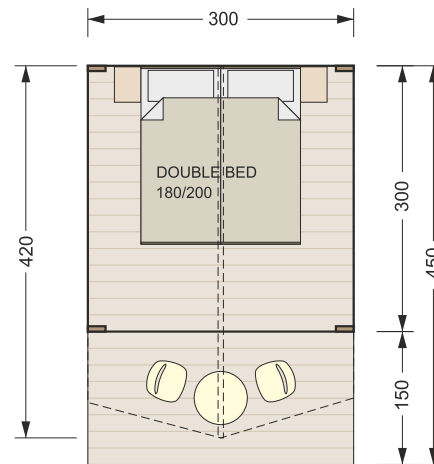
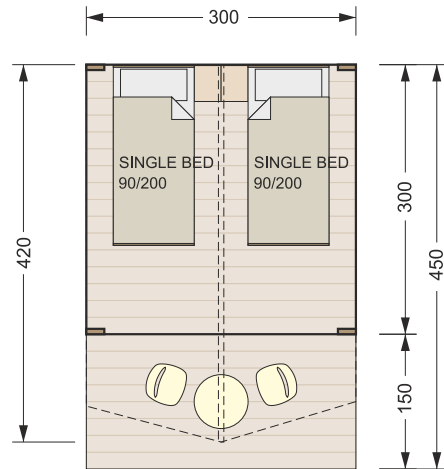
Equipped with lights, one can easily enjoy leisure time in the evenings.



PLEASURE TENT 14

9 m² with ventilation on the platform of 13,50 m²

FLOOR PLAN - LAYOUT OPTIONS



Making sure the construction is solid and long-lasting is the 20 x 10 cm profile CLT wood (Cross Laminated Timber Wood) – the best natural solution, synonymous with strength, protection and longevity.

There are no metal elements connecting the construction frame in order to avoid inevitable corrosion issues. Furthermore, a completely natural construction without intrusive metal parts is more pleasing to the eye.

Only recyclable natural materials (wood, cotton, glass), produced within the EU, are used to create our tents.

Fast assembly of tents is offered, within no more than 1 or 2 days and with 3 to 4 construction workers completing the construction work. Tents are adaptable in size, color, material and form – customers are invited to even choose custom-made graphics or printed logos.



FESTIVAL GHOST TENT 14



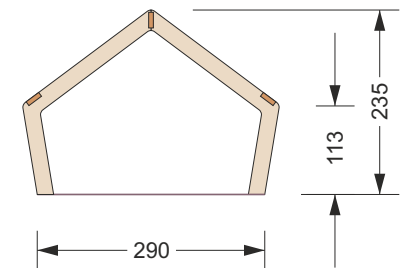
FESTIVAL 14 GHOST TENT

1 bedroom with a king-size bed

- living area: 9 m²
- platform: 13,5 m²
- terrace: 4,5 m²

CLTimber 20 x 6 cm

Simple and fun-sized, but highly efficient and absolutely fabulous.



FESTIVAL GHOST TENT 14

FLOOR PLAN

Making sure the construction is solid and long-lasting is the 20 x 10 cm profile CLT wood (Cross Laminated Timber Wood) – the best natural solution, synonymous with strength, protection and longevity.

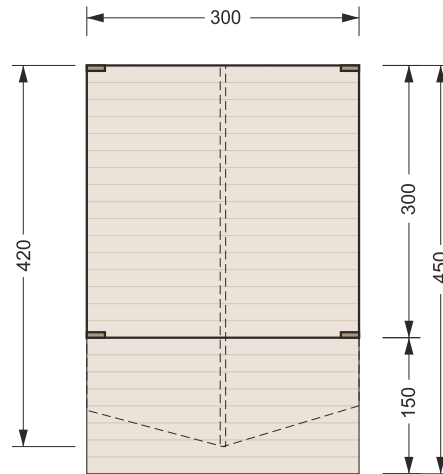
There are no metal elements connecting the construction frame in order to avoid inevitable corrosion issues. Furthermore, a completely natural construction without intrusive metal

parts is more pleasing to the eye.

Only recyclable natural materials (wood, cotton, glass), produced within the EU, are used to create our tents.

Tents are adaptable in size, color, material and form – customers are invited to even choose custom-made graphics or printed logos.

Wood construction platform 9,00 m² (3,0 x 3,0 m).



9 m² on the platform of 13,50 m²

DETAILS



THE KINGDOM LINE

KINGDOM VILLA TENT 9X5



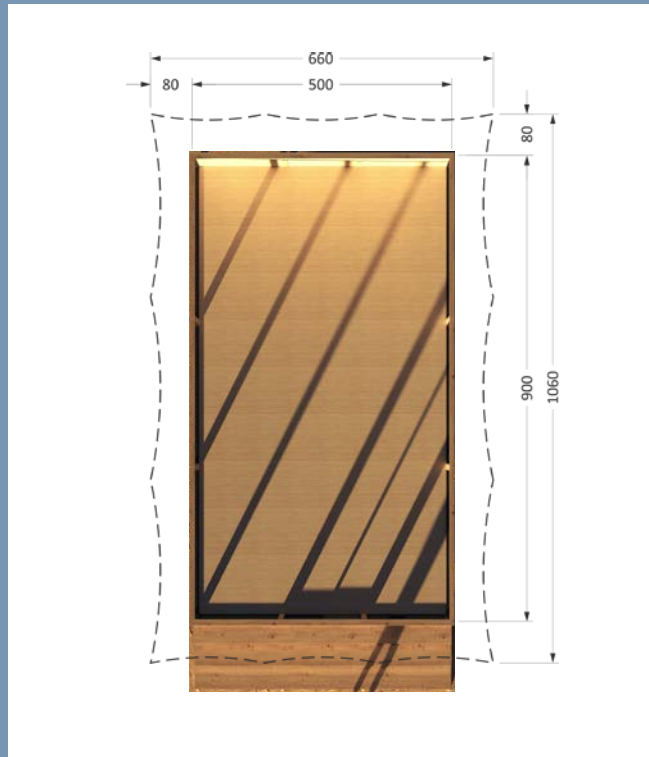
45 m² on the wooden platform

KINGDOM VILLA TENT 9X5

Are you looking to reset, regroup, do you need to take a break? The Kingdom 9 x 5 Villa Tent from the Kingdom Line is the most elegant solution for anyone in search of a spacious, luxuriously designed, and comfortable retreat. The weather-resistant tent stands on a stable, long-lasting construction, provided by the 16 x 16 cm profile CLT Wood (Cross Laminated Timber Wood). CLT Wood is simply the best natural solution, synonymous with strength, protection, and longevity. The also tent boasts a beautifully shaped roof, available in various natural shades.

Spending time inside the 9 x 5 Villa Tent is the most pleasurable experience for the entire family – the parents will love its functionality combined seamlessly with timeless elegance, while the children will love its untamed adventurous spirit. Let yourself be entertained and relaxed while enjoying beautiful sunsets and sunrises or the serenity during the full moon.

You will find no metal elements connecting the construction frame – with this, the otherwise inevitable corrosion issues are completely avoided. Furthermore, a fully natural product with no intrusive metal elements offers is without a doubt more pleasing to the eye, giving the most wonderful impression of genuineness and the opportunity to get close to nature. The



Floor plan

tent is created using only recyclable natural materials (wood, cotton, glass), produced within the EU.

The Kingdom Line tents are adaptable in size, color, material, and form – customers are invited to choose custom-made graphics or printed logos.



KINGDOM VILLA TENT 6X4



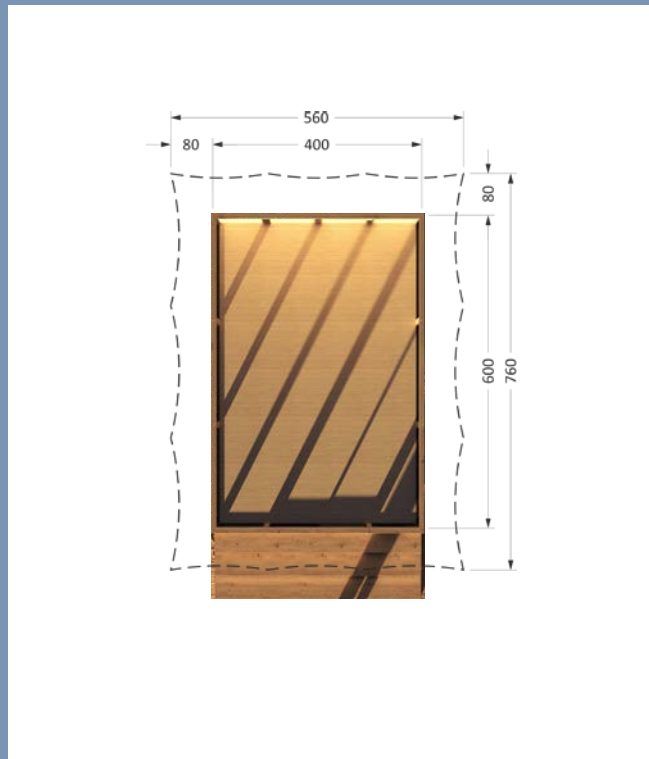
24 m² on the wooden platform

KINGDOM VILLA TENT 6X4

Search no more – this is your ideal getaway! The Kingdom 6 x 4 is the smaller variation of a cleverly designed Villa Tent, perfect for anyone who wishes to disconnect from the everyday world in an optimized, yet still incredibly comfortable accommodation, all while enjoying the beautiful surrounding outdoors. The weather-resistant tent stands on a stable, long-lasting construction, provided by the 14 x 14 cm profile CLT Wood (Cross Laminated Timber Wood). CLT Wood is simply the best natural solution, synonymous with strength, protection, and longevity. The tent also boasts a beautifully shaped roof, available in various natural shades.

Spending time inside the 6 x 4 Villa Tent is a fun experience for the entire family – the parents will love its functionality and unique style, while the children will love its magical adventurous spirit. Enjoy your evenings grilling, playing cards, and boardgames – simply reconnecting with your loved ones!

You will find no metal elements connecting the construction frame – with this, the otherwise inevitable corrosion issues are completely avoided. Furthermore, a fully natural product with no intrusive metal elements offers is without a doubt more pleasing to the eye, giving the most wonderful impression of genuineness and the opportunity to get close to nature. The



Floor plan

tent is created using only recyclable natural materials (wood, cotton, glass), produced within the EU.

The Kingdom Line tents are adaptable in size, color, material, and form – customers are invited to choose custom-made graphics or printed logos.



THE ADVENTURE LINE

ADVENTURE TENT



ADVENTURE TENT



Within the quality standards of our products and our vision in the development process, we designed a luxury glamping tent of a new generation. Developed together with leading engineers in tent construction, our products are sustainable, rigid and spacious, offering guests unique living experiences with the discreetly faded lines between indoor and outdoor worlds, resulting in a close connection with nature.

From the chassis rises, a wooden structure made of colored spruce circular turned B - lama connected by hot-dip galvanized iron joints. The canvas of the housing module is attached to the wooden structure with an innovative patented technique, giving the tent a unique final product look.



MATERIAL & DURABILITY

We strive to find world-class materials and combine them with the best fabric technology available to secure proper wind resistance, protection from the sun, and durability.

CLT – CROSS LAMINATED TIMBER WOOD CONSTRUCTION

The state-of-the-art self-supporting construction frame features no metal pieces, as it is made of wood (CLT – Cross Laminated Timber Wood) to avoid corrosion and prolong the tent's lifespan while making sure the set-up is very easy and fast, taking no longer than 2 days. It is also highly resistant to unfavorable weather conditions, even the strong 120 km/h winds.

TERRACE

Outside, there is a spacious solid wood terrace, available with an optional shade sail to provide more shade and privacy. Flooring, made of CLT plates, can be then covered with vinyl or a carpet. Upon request, the deck can be equipped with stylish outdoor furniture, such as a table with chairs or an outdoor sofa/beanbags. The terrace is also perfect for small pool options or a jacuzzi.

WINDOWS

Windows come optionally equipped with curtains and insect nets, however, it is also possible to place a divider curtain in the living room to secure more privacy or some extra space.

PLATFORM

The platform is supported by buzzons, adjustable pedestals for outdoor raised flooring, which make the deck horizontally even when setting it up on uneven terrain. Included are also steps, manufactured from solid wood.

SATTLER CANVAS

The exterior of the tent is created with bright colours colors, however, customers can choose between various colors of the top-quality canvas, supplied by the renowned Sattler company. The exterior canvas is used to manufacture the roof (fire-resistant PVC material, light tent

matt, 600 g), while the walls and the ceiling are created with materials, best fitted for the interior. Sattler material is known for its extensive FR-certifications, usable in European as well as Anglo-American regions, aesthetic colours colors, suitable for sun- & weather protection as well as industrial applications, high-glossy surface sealing, which renders a very nice visual appearance and excellent cleanability. Moreover, Bedouin's unique solution, combining the roof and the ceiling, adds significantly to maintaining lower temperatures inside the tent during long hot summer days. You can opt for the fabric colour of your choice, as well for printed graphics or a logo.

FABRICS COLOUR OPTIONS



The exterior canvas is used to manufacture the roof (fire-resistant PVC material, light tent matt, 600 g), while the walls and the ceiling are created with materials, best fitted for

the interior. Sattler material is known for its extensive FR-certifications, usable in European as well as Anglo-American regions, aesthetic colors, suitable for sun & weather protection

as well as industrial applications, high-glossy surface sealing, which renders a very nice visual appearance and excellent cleanability.



SELECTION OF MATERIALS

OUTER TENT



Sattler 6M0



Sattler 548



Sattler 646

Sattler 5M3

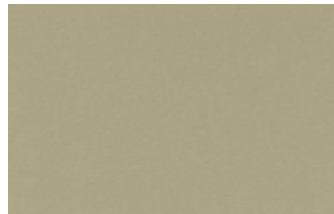
INNER TENT



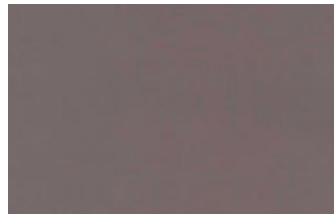
Sattler 386 712



Sattler 386 028



Florida 34



Florida 69

OUTER TENT


The outer walls protect the tent. Acrylic or PVC coated fabrics are the perfect choice for this application.

TECHNISCHE DATEN / TECHNICAL DATA	SPECIFICHE TECNICHE / SPECIFIC TECHNICAL DATA	STANDARDS	TACS POLYURETHAN Two-Component / Zwei-Komponent
Grundgewichte base fabric	densité de base applied base fabric	EN 80005	polyester
Stitching seams	aplique applied seams	EN ISO 8984	LS
Flächengewicht total weight	peso totale peso total	EN EN ISO 22982-2	540 540 g/m²
Hochdruckfest max. tensile strength	resistencia alle trazioni resistencia a la tracción resistencia à tracción	EN EN ISO 1421 ASTM D 751 65 lbf/in. 2 Phos. 60 Car 60	2800/2500 N/5 cm 420/300 lbf 311/200 lbf
Wetterbeständig low resistance	resistencia alle intemperie resistencia al intemperie resistencia à la dégradation atmosphérique	EN ISO 1063 ASTM D 751 65 lbf/in. 2 Torque	2000/50 % 250/40 lbf
Haltbarkeit adhesion	adesione adherencia adhesão	EN EN ISO 2451	100 245 cm²
Kältebeständigkeit cold resistance	resistencia al frodo resistencia al frío resistência ao frio	EN EN 1216-1-2000	-50°C
Wärmebeständigkeit heat resistance	resistencia al calor resistencia al calor resistencia à la chaleur	ISO 15658	+100°C
Leuchteinsatz light transmittance	transmissão luminosa transmissão de luz transmissão de luz	EN EN ISO 10540	≥ 7
Brandverhalten Class of Groupes de Réaction enclasse	comportamento a fuoco comportamento al fuego comportement à l'incendie comportement à l'incendie comportement à l'incendie	EN EN 13501-1 EN EN 13501-2 EN EN 13501-3 EN EN 13501-4 EN EN 13501-5 EN EN 13501-6 EN EN 13501-7 EN EN 13501-8 EN EN 13501-9 EN EN 13501-10 EN EN 13501-11 EN EN 13501-12 EN EN 13501-13 EN EN 13501-14 EN EN 13501-15 EN EN 13501-16 EN EN 13501-17 EN EN 13501-18 EN EN 13501-19 EN EN 13501-20 EN EN 13501-21 EN EN 13501-22 EN EN 13501-23 EN EN 13501-24 EN EN 13501-25 EN EN 13501-26 EN EN 13501-27 EN EN 13501-28 EN EN 13501-29 EN EN 13501-30 EN EN 13501-31 EN EN 13501-32 EN EN 13501-33 EN EN 13501-34 EN EN 13501-35 EN EN 13501-36 EN EN 13501-37 EN EN 13501-38 EN EN 13501-39 EN EN 13501-40 EN EN 13501-41 EN EN 13501-42 EN EN 13501-43 EN EN 13501-44 EN EN 13501-45 EN EN 13501-46 EN EN 13501-47 EN EN 13501-48 EN EN 13501-49 EN EN 13501-50 EN EN 13501-51 EN EN 13501-52 EN EN 13501-53 EN EN 13501-54 EN EN 13501-55 EN EN 13501-56 EN EN 13501-57 EN EN 13501-58 EN EN 13501-59 EN EN 13501-60 EN EN 13501-61 EN EN 13501-62 EN EN 13501-63 EN EN 13501-64 EN EN 13501-65 EN EN 13501-66 EN EN 13501-67 EN EN 13501-68 EN EN 13501-69 EN EN 13501-70 EN EN 13501-71 EN EN 13501-72 EN EN 13501-73 EN EN 13501-74 EN EN 13501-75 EN EN 13501-76 EN EN 13501-77 EN EN 13501-78 EN EN 13501-79 EN EN 13501-80 EN EN 13501-81 EN EN 13501-82 EN EN 13501-83 EN EN 13501-84 EN EN 13501-85 EN EN 13501-86 EN EN 13501-87 EN EN 13501-88 EN EN 13501-89 EN EN 13501-90 EN EN 13501-91 EN EN 13501-92 EN EN 13501-93 EN EN 13501-94 EN EN 13501-95 EN EN 13501-96 EN EN 13501-97 EN EN 13501-98 EN EN 13501-99 EN EN 13501-100 EN EN 13501-101 EN EN 13501-102 EN EN 13501-103 EN EN 13501-104 EN EN 13501-105 EN EN 13501-106 EN EN 13501-107 EN EN 13501-108 EN EN 13501-109 EN EN 13501-110 EN EN 13501-111 EN EN 13501-112 EN EN 13501-113 EN EN 13501-114 EN EN 13501-115 EN EN 13501-116 EN EN 13501-117 EN EN 13501-118 EN EN 13501-119 EN EN 13501-120 EN EN 13501-121 EN EN 13501-122 EN EN 13501-123 EN EN 13501-124 EN EN 13501-125 EN EN 13501-126 EN EN 13501-127 EN EN 13501-128 EN EN 13501-129 EN EN 13501-130 EN EN 13501-131 EN EN 13501-132 EN EN 13501-133 EN EN 13501-134 EN EN 13501-135 EN EN 13501-136 EN EN 13501-137 EN EN 13501-138 EN EN 13501-139 EN EN 13501-140 EN EN 13501-141 EN EN 13501-142 EN EN 13501-143 EN EN 13501-144 EN EN 13501-145 EN EN 13501-146 EN EN 13501-147 EN EN 13501-148 EN EN 13501-149 EN EN 13501-150 EN EN 13501-151 EN EN 13501-152 EN EN 13501-153 EN EN 13501-154 EN EN 13501-155 EN EN 13501-156 EN EN 13501-157 EN EN 13501-158 EN EN 13501-159 EN EN 13501-160 EN EN 13501-161 EN EN 13501-162 EN EN 13501-163 EN EN 13501-164 EN EN 13501-165 EN EN 13501-166 EN EN 13501-167 EN EN 13501-168 EN EN 13501-169 EN EN 13501-170 EN EN 13501-171 EN EN 13501-172 EN EN 13501-173 EN EN 13501-174 EN EN 13501-175 EN EN 13501-176 EN EN 13501-177 EN EN 13501-178 EN EN 13501-179 EN EN 13501-180 EN EN 13501-181 EN EN 13501-182 EN EN 13501-183 EN EN 13501-184 EN EN 13501-185 EN EN 13501-186 EN EN 13501-187 EN EN 13501-188 EN EN 13501-189 EN EN 13501-190 EN EN 13501-191 EN EN 13501-192 EN EN 13501-193 EN EN 13501-194 EN EN 13501-195 EN EN 13501-196 EN EN 13501-197 EN EN 13501-198 EN EN 13501-199 EN EN 13501-200 EN EN 13501-201 EN EN 13501-202 EN EN 13501-203 EN EN 13501-204 EN EN 13501-205 EN EN 13501-206 EN EN 13501-207 EN EN 13501-208 EN EN 13501-209 EN EN 13501-210 EN EN 13501-211 EN EN 13501-212 EN EN 13501-213 EN EN 13501-214 EN EN 13501-215 EN EN 13501-216 EN EN 13501-217 EN EN 13501-218 EN EN 13501-219 EN EN 13501-220 EN EN 13501-221 EN EN 13501-222 EN EN 13501-223 EN EN 13501-224 EN EN 13501-225 EN EN 13501-226 EN EN 13501-227 EN EN 13501-228 EN EN 13501-229 EN EN 13501-230 EN EN 13501-231 EN EN 13501-232 EN EN 13501-233 EN EN 13501-234 EN EN 13501-235 EN EN 13501-236 EN EN 13501-237 EN EN 13501-238 EN EN 13501-239 EN EN 13501-240 EN EN 13501-241 EN EN 13501-242 EN EN 13501-243 EN EN 13501-244 EN EN 13501-245 EN EN 13501-246 EN EN 13501-247 EN EN 13501-248 EN EN 13501-249 EN EN 13501-250 EN EN 13501-251 EN EN 13501-252 EN EN 13501-253 EN EN 13501-254 EN EN 13501-255 EN EN 13501-256 EN EN 13501-257 EN EN 13501-258 EN EN 13501-259 EN EN 13501-260 EN EN 13501-261 EN EN 13501-262 EN EN 13501-263 EN EN 13501-264 EN EN 13501-265 EN EN 13501-266 EN EN 13501-267 EN EN 13501-268 EN EN 13501-269 EN EN 13501-270 EN EN 13501-271 EN EN 13501-272 EN EN 13501-273 EN EN 13501-274 EN EN 13501-275 EN EN 13501-276 EN EN 13501-277 EN EN 13501-278 EN EN 13501-279 EN EN 13501-280 EN EN 13501-281 EN EN 13501-282 EN EN 13501-283 EN EN 13501-284 EN EN 13501-285 EN EN 13501-286 EN EN 13501-287 EN EN 13501-288 EN EN 13501-289 EN EN 13501-290 EN EN 13501-291 EN EN 13501-292 EN EN 13501-293 EN EN 13501-294 EN EN 13501-295 EN EN 13501-296 EN EN 13501-297 EN EN 13501-298 EN EN 13501-299 EN EN 13501-300 EN EN 13501-301 EN EN 13501-302 EN EN 13501-303 EN EN 13501-304 EN EN 13501-305 EN EN 13501-306 EN EN 13501-307 EN EN 13501-308 EN EN 13501-309 EN EN 13501-310 EN EN 13501-311 EN EN 13501-312 EN EN 13501-313 EN EN 13501-314 EN EN 13501-315 EN EN 13501-316 EN EN 13501-317 EN EN 13501-318 EN EN 13501-319 EN EN 13501-320 EN EN 13501-321 EN EN 13501-322 EN EN 13501-323 EN EN 13501-324 EN EN 13501-325 EN EN 13501-326 EN EN 13501-327 EN EN 13501-328 EN EN 13501-329 EN EN 13501-330 EN EN 13501-331 EN EN 13501-332 EN EN 13501-333 EN EN 13501-334 EN EN 13501-335 EN EN 13501-336 EN EN 13501-337 EN EN 13501-338 EN EN 13501-339 EN EN 13501-340 EN EN 13501-341 EN EN 13501-342 EN EN 13501-343 EN EN 13501-344 EN EN 13501-345 EN EN 13501-346 EN EN 13501-347 EN EN 13501-348 EN EN 13501-349 EN EN 13501-350 EN EN 13501-351 EN EN 13501-352 EN EN 13501-353 EN EN 13501-354 EN EN 13501-355 EN EN 13501-356 EN EN 13501-357 EN EN 13501-358 EN EN 13501-359 EN EN 13501-360 EN EN 13501-361 EN EN 13501-362 EN EN 13501-363 EN EN 13501-364 EN EN 13501-365 EN EN 13501-366 EN EN 13501-367 EN EN 13501-368 EN EN 13501-369 EN EN 13501-370 EN EN 13501-371 EN EN 13501-372 EN EN 13501-373 EN EN 13501-374 EN EN 13501-375 EN EN 13501-376 EN EN 13501-377 EN EN 13501-378 EN EN 13501-379 EN EN 13501-380 EN EN 13501-381 EN EN 13501-382 EN EN 13501-383 EN EN 13501-384 EN EN 13501-385 EN EN 13501-386 EN EN 13501-387 EN EN 13501-388 EN EN 13501-389 EN EN 13501-390 EN EN 13501-391 EN EN 13501-392 EN EN 13501-393 EN EN 13501-394 EN EN 13501-395 EN EN 13501-396 EN EN 13501-397 EN EN 13501-398 EN EN 13501-399 EN EN 13501-400 EN EN 13501-401 EN EN 13501-402 EN EN 13501-403 EN EN 13501-404 EN EN 13501-405 EN EN 13501-406 EN EN 13501-407 EN EN 13501-408 EN EN 13501-409 EN EN 13501-410 EN EN 13501-411 EN EN 13501-412 EN EN 13501-413 EN EN 13501-414 EN EN 13501-415 EN EN 13501-416 EN EN 13501-417 EN EN 13501-418 EN EN 13501-419 EN EN 13501-420 EN EN 13501-421 EN EN 13501-422 EN EN 13501-423 EN EN 13501-424 EN EN 13501-425 EN EN 13501-426 EN EN 13501-427 EN EN 13501-428 EN EN 13501-429 EN EN 13501-430 EN EN 13501-431 EN EN 13501-432 EN EN 13501-433 EN EN 13501-434 EN EN 13501-435 EN EN 13501-436 EN EN 13501-437 EN EN 13501-438 EN EN 13501-439 EN EN 13501-440 EN EN 13501-441 EN EN 13501-442 EN EN 13501-443 EN EN 13501-444 EN EN 13501-445 EN EN 13501-446 EN EN 13501-447 EN EN 13501-448 EN EN 13501-449 EN EN 13501-450 EN EN 13501-451 EN EN 13501-452 EN EN 13501-453 EN EN 13501-454 EN EN 13501-455 EN EN 13501-456 EN EN 13501-457 EN EN 13501-458 EN EN 13501-459 EN EN 13501-460 EN EN 13501-461 EN EN 13501-462 EN EN 13501-463 EN EN 13501-464 EN EN 13501-465 EN EN 13501-466 EN EN 13501-467 EN EN 13501-468 EN EN 13501-469 EN EN 13501-470 EN EN 13501-471 EN EN 13501-472 EN EN 13501-473 EN EN 13501-474 EN EN 13501-475 EN EN 13501-476 EN EN 13501-477 EN EN 13501-478 EN EN 13501-479 EN EN 13501-480 EN EN 13501-481 EN EN 13501-482 EN EN 13501-483 EN EN 13501-484 EN EN 13501-485 EN EN 13501-486 EN EN 13501-487 EN EN 13501-488 EN EN 13501-489 EN EN 13501-490 EN EN 13501-491 EN EN 13501-492 EN EN 13501-493 EN EN 13501-494 EN EN 13501-495 EN EN 13501-496 EN EN 13501-497 EN EN 13501-498 EN EN 13501-499 EN EN 13501-500 EN EN 13501-501 EN EN 13501-502 EN EN 13501-503 EN EN 13501-504 EN EN 13501-505 EN EN 13501-506 EN EN 13501-507 EN EN 13501-508 EN EN 13501-509 EN EN 13501-510 EN EN 13501-511 EN EN 13501-512 EN EN 13501-513 EN EN 13501-514 EN EN 13501-515 EN EN 13501-516 EN EN 13501-517 EN EN 13501-518 EN EN 13501-519 EN EN 13501-520 EN EN 13501-521 EN EN 13501-522 EN EN 13501-523 EN EN 13501-524 EN EN 13501-525 EN EN 13501-526 EN EN 13501-527 EN EN 13501-528 EN EN 13501-529 EN EN 13501-530 EN EN 13501-531 EN EN 13501-532 EN EN 13501-533 EN EN 13501-534 EN EN 13501-535 EN EN 13501-536 EN EN 13501-537 EN EN 13501-538 EN EN 13501-539 EN EN 13501-540 EN EN 13501-541 EN EN 13501-542 EN EN 13501-543 EN EN 13501-544 EN EN 13501-545 EN EN 13501-546 EN EN 13501-547 EN EN 13501-548 EN EN 13501-549 EN EN 13501-550 EN EN 13501-551 EN EN 13501-552 EN EN 13501-553 EN EN 13501-554 EN EN 13501-555 EN EN 13501-556 EN EN 13501-557 EN EN 13501-558 EN EN 13501-559 EN EN 13501-560 EN EN 13501-561 EN EN 13501-562 EN EN 13501-563 EN EN 13501-564 EN EN 13501-565 EN EN 13501-566 EN EN 13501-567 EN EN 13501-568 EN EN 13501-569 EN EN 13501-570 EN EN 13501-571 EN EN 13501-572 EN EN 13501-573 EN EN 13501-574 EN EN 13501-575 EN EN 13501-576 EN EN 13501-577 EN EN 13501-578 EN EN 13501-579 EN EN 13501-580 EN EN 13501-581 EN EN 13501-582 EN EN 13501-583 EN EN 13501-584 EN EN 13501-585 EN EN 13501-586 EN EN 13501-587 EN EN 13501-588 EN EN 13501-589 EN EN 13501-590 EN EN 13501-591 EN EN 13501-592 EN EN 13501-593 EN EN 13501-594 EN EN 13501-595 EN EN 13501-596 EN EN 13501-597 EN EN 13501-598 EN EN 13501-599 EN EN 13501-600 EN EN 13501-601 EN EN 13501-602 EN EN 13501-603 EN EN 13501-604 EN EN 13501-605 EN EN 13501-606 EN EN 13501-607 EN EN 13501-608 EN EN 13501-609 EN EN 13501-610 EN EN 13501-611 EN EN 13501-612 EN EN 13501-613 EN EN 13501-614 EN EN 13501-615 EN EN 13501-616 EN EN 13501-617 EN EN 13501-618 EN EN 13501-619 EN EN 13501-620 EN EN 13501-621 EN EN 13501-622 EN EN 13501-623 EN EN 13501-624 EN EN 13501-625 EN EN 13501-626 EN EN 13501-627 EN EN 13501-628 EN EN 13501-629 EN EN 13501-630 EN EN 13501-631 EN EN 13501-632 EN EN 13501-633 EN EN 13501-634 EN EN 13501-635 EN EN 13501-636 EN EN 13501-637 EN EN 13501-638 EN EN 13501-639 EN EN 13501-640 EN EN 13501-641 EN EN 13501-642 EN EN 13501-643 EN EN 13501-644 EN EN 13501-645 EN EN 13501-646 EN EN 13501-647 EN EN 13501-648 EN EN 13501-649 EN EN 13501-650 EN EN 13501-651 EN EN 13501-652 EN EN 13501-653 EN EN 13501-654 EN EN 13501-655 EN EN 13501-656 EN EN 13501-657 EN EN 13501-658 EN EN 13501-659 EN EN 13501-660 EN EN 13501-661 EN EN 13501-662 EN EN 13501-663 EN EN 13501-664 EN EN 13501-665 EN EN 13501-666 EN EN 13501-667 EN EN 13501-668 EN EN 13501-669 EN EN 13501-670 EN EN 13501-671 EN EN 13501-672 EN EN 13501-673 EN EN 13501-674 EN EN 13501-675 EN EN 13501-676 EN EN 13501-677 EN EN 13501-678 EN EN 13501-679 EN EN 13501-680 EN EN 13501-681 EN EN 13501-682 EN EN 13501-683 EN EN 13501-684 EN EN 13501-685 EN EN 13501-686 EN EN 13501-687 EN EN 13501-688 EN EN 13501-689 EN EN 13501-690 EN EN 13501-691 EN EN 13501-692 EN EN 13501-693 EN EN 13501-694 EN EN 13501-695 EN EN 13501-696 EN EN 13501-697 EN EN 13501-698 EN EN 13501-699 EN EN 13501-700 EN EN 13501-701 EN EN 13501-702 EN EN 13501-703 EN EN 13501-704 EN EN 13501-705 EN EN 13501-706 EN EN 13501-707 EN EN 13501-708 EN EN 13501-709 EN EN 13501-710 EN EN 13501-711 EN EN 13501-712 EN EN 13501-713 EN EN 13501-714 EN EN 13501-715 EN EN 13501-716 EN EN 13501-717 EN EN 13501-718 EN EN 13501-719 EN EN 13501-720 EN EN 13501-721 EN EN 13501-722 EN EN 13501-723 EN EN 13501-724 EN EN 13501-725 EN EN 13501-726 EN EN 13501-727 EN EN 13501-728 EN EN 13501-729 EN EN 13501-730 EN EN 13501-731 EN EN 13501-732 EN EN 13501-733 EN EN 13501-734 EN EN 13501-735 EN EN 13501-736 EN EN 13501-737 EN EN 13501-738 EN EN 13501-739 EN EN 13501-740 EN EN 13501-741 EN EN 13501-742 EN EN 13501-743 EN EN 13501-744 EN EN 13501-745 EN EN 13501-746 EN EN 13501-747 EN EN 13501-748 EN EN 13501-749 EN EN 13501-750 EN EN 13501-751 EN EN 13501-752 EN EN 13501-753 EN EN 13501-754 EN EN 13501-755 EN EN 13501-756 EN EN 13501-757 EN EN 13501-758 EN EN 13501-759 EN EN 13501-760 EN EN 13501-761 EN EN 13501-762 EN EN 13501-763 EN EN 13501-764 EN EN 13501-765 EN EN 13501-766 EN EN 13501-767 EN EN 13501-768 EN EN 13501-769 EN EN 13501-770 EN EN 13501-771 EN EN 13501-772 EN EN 13501-773 EN EN 13501-774 EN EN 13501-775 EN EN 13501-776 EN EN 13501-777 EN EN 13501-778 EN EN 13501-779 EN EN 13501-780 EN EN 13501-781 EN EN 13501-782 EN EN 13501-783 EN EN 13501-784 EN EN 13501-785 EN EN 13501-786 EN EN 13501-787 EN EN 13501-788 EN EN 13501-789 EN EN 13501-790 EN EN 13501-791 EN EN 13501-792 EN EN 13501-793 EN EN 13501-794 EN EN 13501-795 EN EN 13501-796 EN EN 13501-797 EN EN 13501-798 EN EN 13501-799 EN EN 13501-800 EN EN 13501-801 EN EN 13501-802 EN EN 13501-803 EN EN 13501-804 EN EN 13501-805 EN EN 13501-806 EN EN 13501-807 EN EN 13501-808 EN EN 13501-809 EN EN 13501-810 EN EN 13501-811 EN EN 13501-812 EN EN 13501-813 EN EN 13501-814 EN EN 13501-815 EN EN 13501-816 EN EN 13501-817 EN EN 13501-818 EN EN 13501-819 EN EN 13501-820 EN EN 13501-821 EN EN 13501-822 EN EN 13501-823 EN EN 13501-824 EN EN 13501-82	

INNER TENT

Natural materials in the interior create snug and relaxing atmosphere. Fabrics made from cotton, CO/PES, or solution-dyed Acrylic are the right choice for this application.

PPE
Version No: 1
Date of Revision: 24. 07. 2017



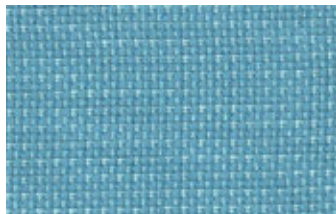
555 220 SOLUTION-TEX COTTON FABRIC TENT

Baumwollgewebe naturell (nicht stückgefärbt), wasserdruckbeständig, faulnishemmend
Cotton fabric (not piece-dyed), resistant to water pressure, rot retardant
Tissu de coton (pas teint en pièce), résistant à la pression d'eau, impuantescible

Gewebe fabric tissu	DIN 60 001	Kette/warp/chaîne: Schuss/weft/trame:	CO CO
Bindung weave armure	DIN ISO 9354		L 1/1 plain weave 1/1 talle 1/1
Fadeneinheit linear density titre	EN ISO 2060	Kette/warp/chaîne: Schuss/weft/trame:	25 tex x 2 25 tex x 2
Fadendichte ends/picks contexure	DIN EN 1049-2	Kette/warp/chaîne: Schuss/weft/trame:	34,0 Fd/cm threads/cm ffs/cm 21,0 Fd/cm threads/cm ffs/cm
Flächengewicht weight poids total	DIN EN 12127		320 g/m ²
Höchstzugkraft max. tensile strength résistance à la rupture	DIN EN ISO13934-1	Kette/warp/chaîne: Schuss/weft/trame:	135 daN/5 cm 95 daN/5 cm
Höchstzugkraftdehnung max. tensile strength elongation elongation max. de la force de traction	DIN EN ISO 13934-1	Kette/warp/chaîne: Schuss/weft/trame:	26,0 % 12,5 %
Weiterreißkraft tear strength résistance à la déchirure arrachée	DIN EN ISO 13937-2	Kette/warp/chaîne: Schuss/weft/trame:	2,5 daN 1,5 daN
Wasserdruckbeständigkeit resistance to water pressure résistance à la pression de l'eau	EN 20 811	glatt/smooth/lisse:	700 mm WS/water column/ colonne d'eau
Wasserabweisung (Sprühverfahren) water repellency (Spray test) résistance au mouillage superficiel (essai d'arrosage)	EN 24 920	Note/grade/note:	90
Muldenprobe Resistance to penetration by water (trough test) poche d'eau	120mm/48 Std./hours/hrs		I O /OK
Wasserdampfdurchlässigkeit (50°C/50% rel. Luftfeuchtigkeit) (20°C/65% rel. Luftfeuchtigkeit) Water vapour permeability Perméabilité à la vapeur d'eau	Sattler ASTM E96		5400 g/m ² /24h 675 g/m ² /24h

SELECTION OF MATERIALS

FURNITURE FABRICS



Michelangelo 50964-06



Michelangelo 50964-10



Michelangelo 50964-14



Michelangelo 50964-22

DIVERSIFIED
TESTING LABORATORIES, INC.
WE OFFER SERVICE - WORLDWIDE

"We Test Per Your Request!"

306 WEST FRONT STREET
PO BOX 4004
BURLINGTON, NORTH CAROLINA 27215
PHONE: (336) 227-7750 • FAX: (336) 227-7175
www.diversifiedtestinglabs.com

January 5, 2017

Ms. Barbara Ferrari
PARA S.p.A.
Viale Monza, 1
20845 Sovico (MB) Italy

Reference: Laboratory Test Report
Lab Identification No. 23081
Invoice No. 54229

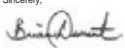
Dear Ms. Ferrari:


One (1) fabric sample, identified as **TEMPOTEST STAR FR**, was received and tested in accordance with the National Fire Protection Association No. 701, "Standard Methods of Fire Tests for Flame Propagation of Textiles and Films, 2015 Edition, (Test 1, Small Scale)". The results are as follows:

Specimen Number	Test Results	
	Residual Flame (seconds)	Weight Loss (percent)
1	0.0	14.86
2	0.0	2.83
3	0.0	7.01
4	0.0	5.82
5	0.0	8.91
6	0.0	7.07
7	0.0	8.96
8	0.0	10.88
9	0.0	11.74
10	0.0	9.53
AVG	0.0	8.76

The sample submitted **meets** the minimum requirements of the above standard. The average percent weight loss cannot exceed 40% and the weight loss of individual specimens cannot exceed mean value plus three standard deviations. The average residual flame cannot exceed 2.0 seconds.

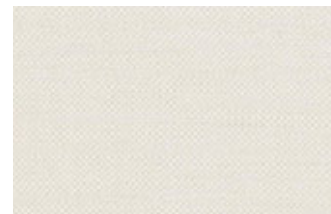
If there are any questions or when we can be of further assistance, please let us know.

Sincerely,

Brian S. Dement
BSD/mr



OUR LETTERS AND REPORTS ARE FOR THE EXCLUSIVE USE OF THE CLIENT TO WHOM THEY ARE ADDRESSED. ANY COMMUNICATION TO OTHERS OR THE USE OF OUR COMPANY NAME MUST RECEIVE PRIOR APPROVAL. OUR TEST RESULTS APPLY ONLY TO THE SAMPLE TESTED AND ARE NOT GUARANTEES INDICATIVE OF THE QUALITY OF APPARENTLY IDENTICAL OR SIMILAR PRODUCTS. SAMPLES NOT DESTROYED IN TESTING ARE NOT UNDER A GUARANTEE FROM THE TESTER. REPORTS OR NAME OF DIVERSIFIED TESTING LABORATORIES, INC. MUST NOT BE USED IN ADVERTISING TO THE GENERAL PUBLIC.

COURTAIN FABRICS



Mercis Illusion 02



Mercis Illusion 04

Art. ILLUSION

SESTAVA:
100% POLIESTER

COMPOSITION:
100% POLYESTER

SIROVINSKI SASTAV:
100% POLIESTERSKO VLAKNO

ZUSAMMENSETZUNG:
100% POLYESTER

COMPOSIZIONE:
100% POLIESTERE

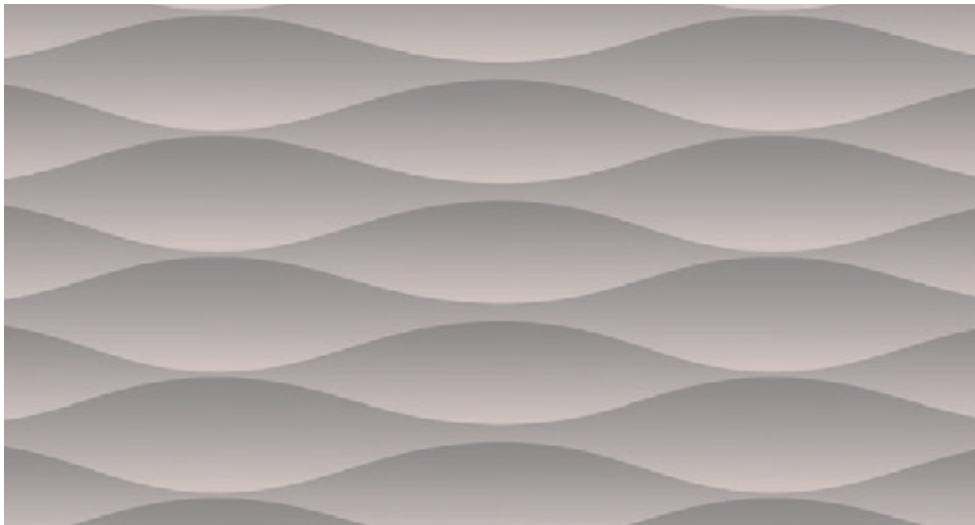
Širina / Breite / Width / Alcezza

ŠIRINA / WIDTH / ŠIRINA / BREITE / ALTEZZA: 300 cm

TEŽA / WEIGHT / TEŽINA / GEWICHT / PESO: 153 gr/m²



FURNITURE BOARDS PATTERNS



REFERENCES

EVIA LIFE RESORT, COSTA RICA

GreenStar is a franchisor of the EVIA Life Resort in Costa Rica.

www.evialiferesort.com



Pick your own fruit from the tree, immerse yourself in intimacy at the yoga resort, watch and listen to the birds in the treetops, relax in your own pool villa and stay connected to the local community.



EVIA Life Resort presents a new authentic concept of luxury, connecting us back to the earth. Live your tropical dream in the middle of the jungle on the Caribbean coast of Costa Rica.

REFERENCES

OBLUN ECO RESORT, MONTENEGRO

www.oblun.com



Oblun Eco Glamping Resort in Montenegro.

THE AL KHOR VILLAGE PROJECT, QATAR



The Bedouin tent with masterfully selected color tones and materials as well as its unique design, seamlessly merges with its natural surroundings.



Setting the Villa tents next to one another will create a picturesque first-class lane that the guests will love to return to and enjoy.



GREEN STAR COMPANY

We are an innovative multidisciplinary team of experts from the textile industry, wood industry, construction, sailing, and modern design. We have joined our areas of expertise and can now offer unique solutions in the field of luxury accommodation.

Our team designs and manufactures custom made and environmentally sustainable luxury glamping tents. We provide accommodation for guests who desire to leave a low impact on the environment. All the materials used for the manufacturing process are produced in the EU, guaranteeing the highest quality and come with environmental certificates. Each glamping resort is designed according to our client's wishes with the help of our knowledge and innovative solutions.

EXTERIOR

The entire tent construction is made of wood and covered with technical textile with natural appearance and colors, impeccably suited for open-air living. The flexibility of the material enables the unique shape of the tent's roof. Three glass walls offer the ultimate glamping experience, where stunning nature meets modern luxury.

INTERIOR

The entire back wall and inner roof are made of cotton fabric, ensuring the tent's climate feels as natural as possible. Privacy is provided by long and elegant curtains. The exquisitely designed furniture, along with carefully selected natural colors, will make any guest feel homely and cosy.

TURNKEY SOLUTIONS

We carry out our projects from A to Z, on a "Turnkey" basis.

GreenStar is a franchisor of the GAIA Luxury Resort in Puerto Viejo in Costa Rica.

All projects are designed by Robert Klun Architects & Magnet Design.

www.green-star.luxury



At Rober Klun Architects we create ambients, business, public, private, hospitality, etc.

Rober Klun Architects was born from Klun Ambienti, a family-run company with 40 years' tradition in upholstered furniture production and many notable references under their scissors. With a growing need

for project-oriented approach to upholstery furnishing jobs and a growing demand for a comprehensive service on projects, a unique design and planning team was formed - Rober Klun Architects.

At Rober Klun Architects, our clients are offered complete support in creating spaces. Together with our

partners we can work with you from concept to the champagne. We can join you on your project at any time – at the design and planning stage as architects or at the execution stage as providers of first class builders' and craftsmen's services and as supplier of top quality interior finishes and furnishings. Our field of expertise lies

in architecture and interior design.

We provide project idea development, consulting and execution.

Our goal is to make your experience in creating your environment as simple and as pleasant as possible. Go about your business, let us design your life.







Represented by:



TW CONSULTING
& TRADE LTD.



TWERASER TRADING FZ-LLC

Wolfgang Tweraser
CEO/President

wolfgang@TWCTMT.com

Tel EU: +356 9942 9829
Tel UAE: +971 50 209 3055